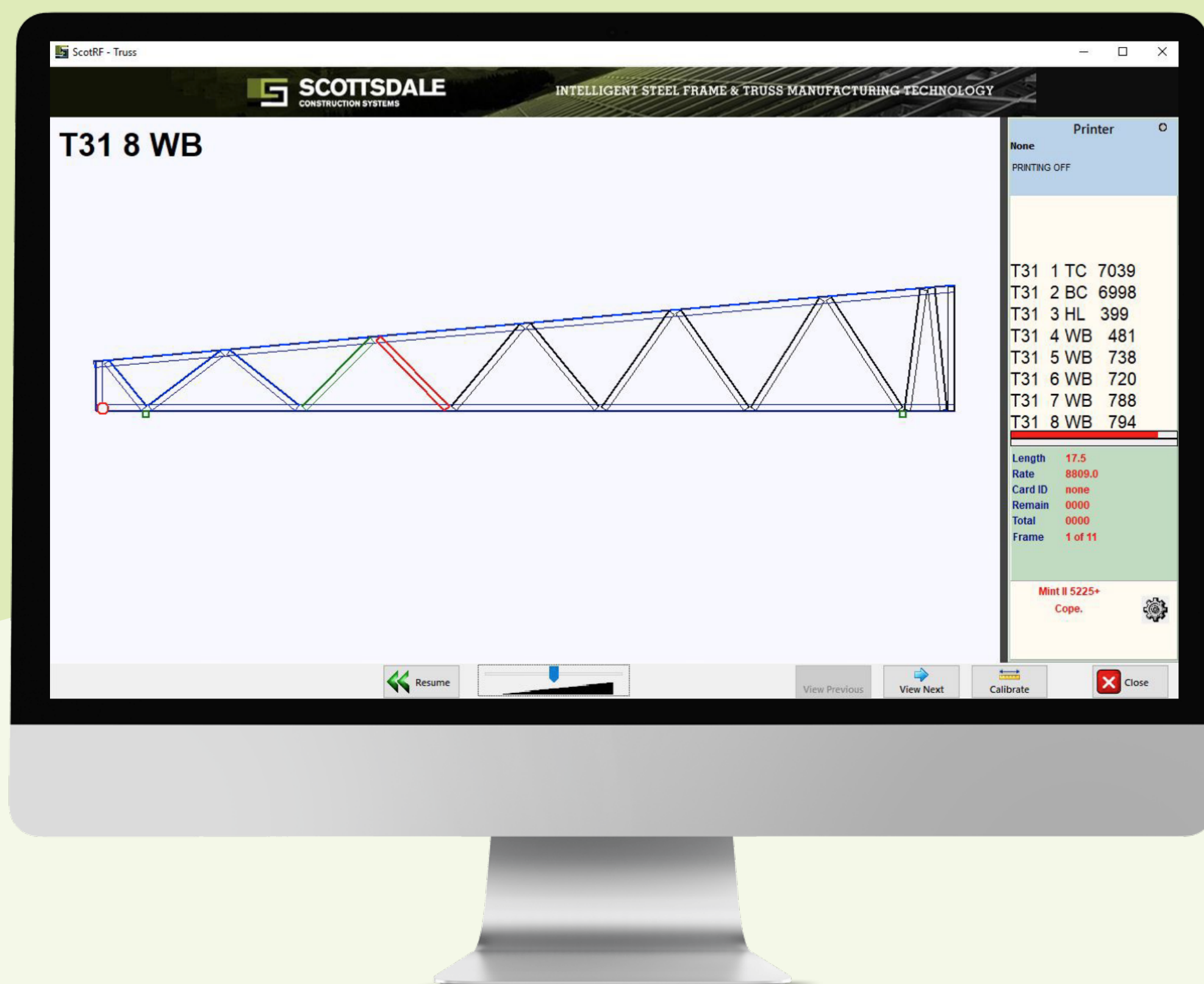


ScotRF

Rollformer Software



**Automated rollformer production.
More steel. Less time. Fewer staff.**

Optimise panel and truss assembly, monitor production and diagnostics visually in real-time. And make live design changes.



SCOTTSDALE
CONSTRUCTION SYSTEMS

Optimised panel & truss production.

Rollformer software that automates and optimises steel production. Minimal operator input and maximum steel output. ScotRF connects seamlessly with ScotSteel design and engineering software.



Optimised Output

for maximum efficiency of machine and assembly process

Production

Automated, Optimised, Intuitive

ScotRF is the bridge between design / engineering and rollformer machines, producing light gauge steel panels and trusses in minutes.

It **interprets geometric data** from ScotSteel and **performs design checks** to alert operators to any issues.

Designs are **converted into machine commands**, enabling **automated production** to commence: rollforming, cut to length, notch, punch, swage and more.

An **intuitive visual representation** of the rollforming process is provided graphically on-screen. Components are **colour-coded** to indicate the order of each piece on assembly line.

ScotRF automatically optimises output for maximum efficiency of panel and truss assembly, minimising any downtime for assembly teams.

Output order can be user-defined where production situations require this. And **output speed** can similarly be controlled to suit the factory and team needs.

Emergency alterations can be made in ScotRF, so operators don't have to waste time sending jobs back to design.

Steel Printing is also controlled via ScotRF (where optional inkjet printers are installed on the rollformer)

Real-time machine diagnostics allow operators to monitor production for optimal performance.



Optimised
production



Auto
design checks



Auto
conversion



On-screen
assembly



Colour-coded
components



Alterations
built-in



Printing
to steel



Diagnostics
in real-time



Custom speed
controls



A single, integrated solution

Our user-friendly in-house software smooths the way, reducing the traditional multi-step fabrication process down to one integrated solution. This saves time and money for fabricators, builders and those independent contractors who supply design, detailing and engineering analysis services to the industry.



Unlimited Licences

Don't worry about paying extra when you expand with new detailers and new computers. We provide unlimited software licences as part of your service agreement.



Unlimited (Free) Updates

As part of your software support package, you'll receive free software updates, to ensure you continue operating with the latest innovations and software optimisation.



Unlimited (24/7) Support

Our support is unlimited, worldwide, 24/7. No matter how often, no matter the problem — software, design or machine — we'll quickly get you back operating efficiently, with unlimited support included in the one predictable package fee.



Training & Staffing

Our personalised software training puts your people in confident control from the start. Ongoing training is provided as needed, as well as on-demand online courses available always.

We can also connect you with detailing contractors already versed in our design and engineering software.

The Scottsdale Ecosystem

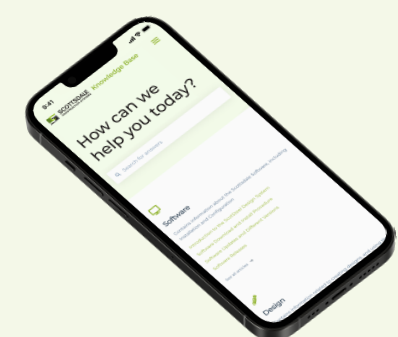
Our software forms part of our steel fabrication **ecosystem** to power growth and profitability for your steel fabrication operations.



Modern Machines

Grunt, performance and next-level engineering, all in a compact, agile chassis for maximum productivity.

Rollformers | C Section and Top Hat Profiles



Support Services

Support that starts on day 1 and never ends, including training, maintenance, parts, knowledge base, and a 24/7 support team globally.



Framing Know-How

Leverage our 25+ years of operational experience, with best-practice setup, training, staffing and a host of tools and templates to guide your success.

Frame your business future with light gauge steel

Get in touch with us to learn more about the Scottsdale Steel Framing ecosystem. Let us show what your ROI might look like on our business modelling calculator.



Contact | Global Headquarters



+61 1300 671 345



Unit 4, 5 Henry St, Loganholme, Qld, 4129, Australia



sales@scottsdalesteelframes.com

More from Scottsdale

For information on the full range of machines, software and support available from Scottsdale, visit our website, scottsdalesteelframes.com.