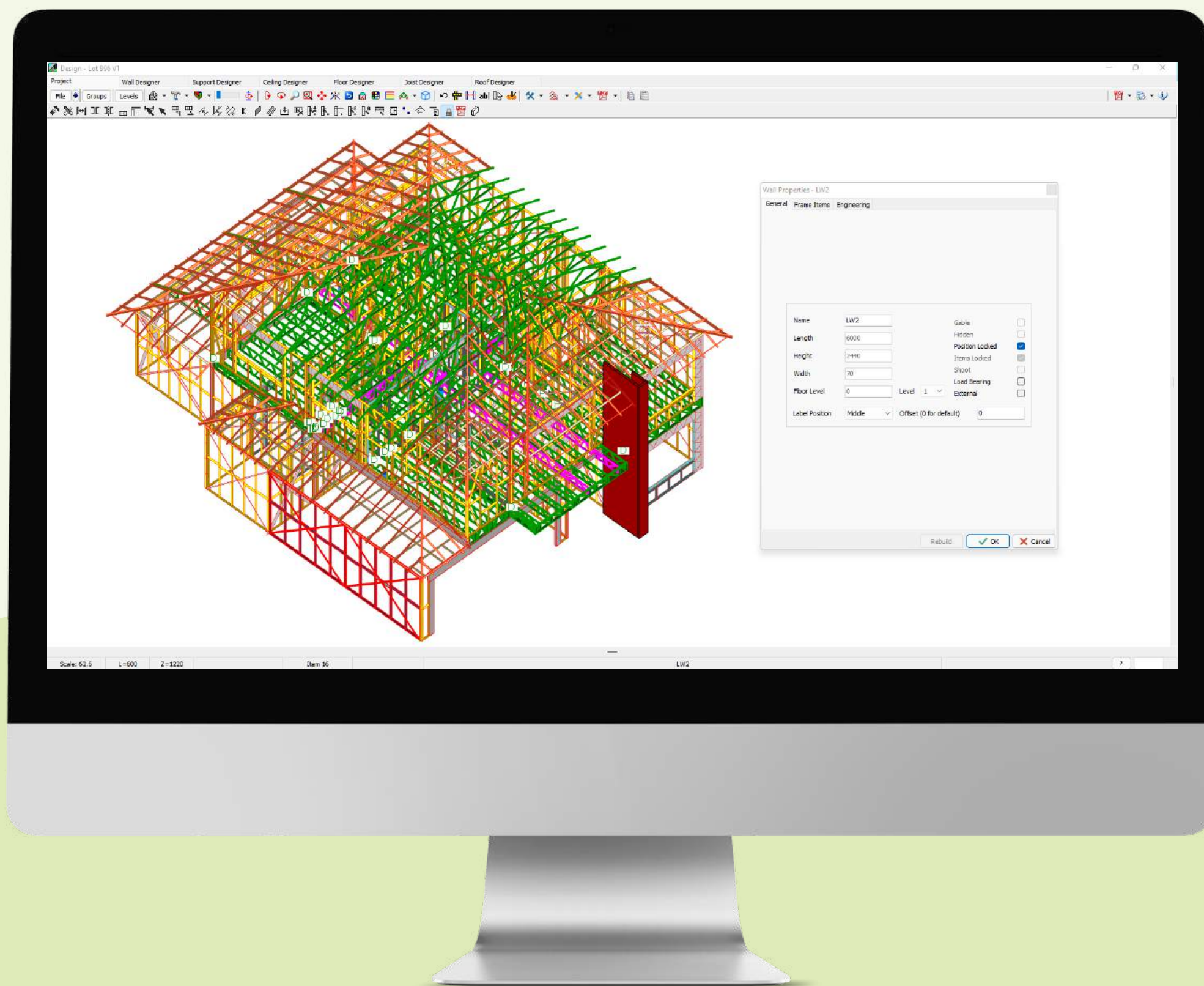


# ScotSteel

## Design & Engineering Software



**From building design to  
framing production in no time.**

User-friendly software for steel framing  
design and engineering.

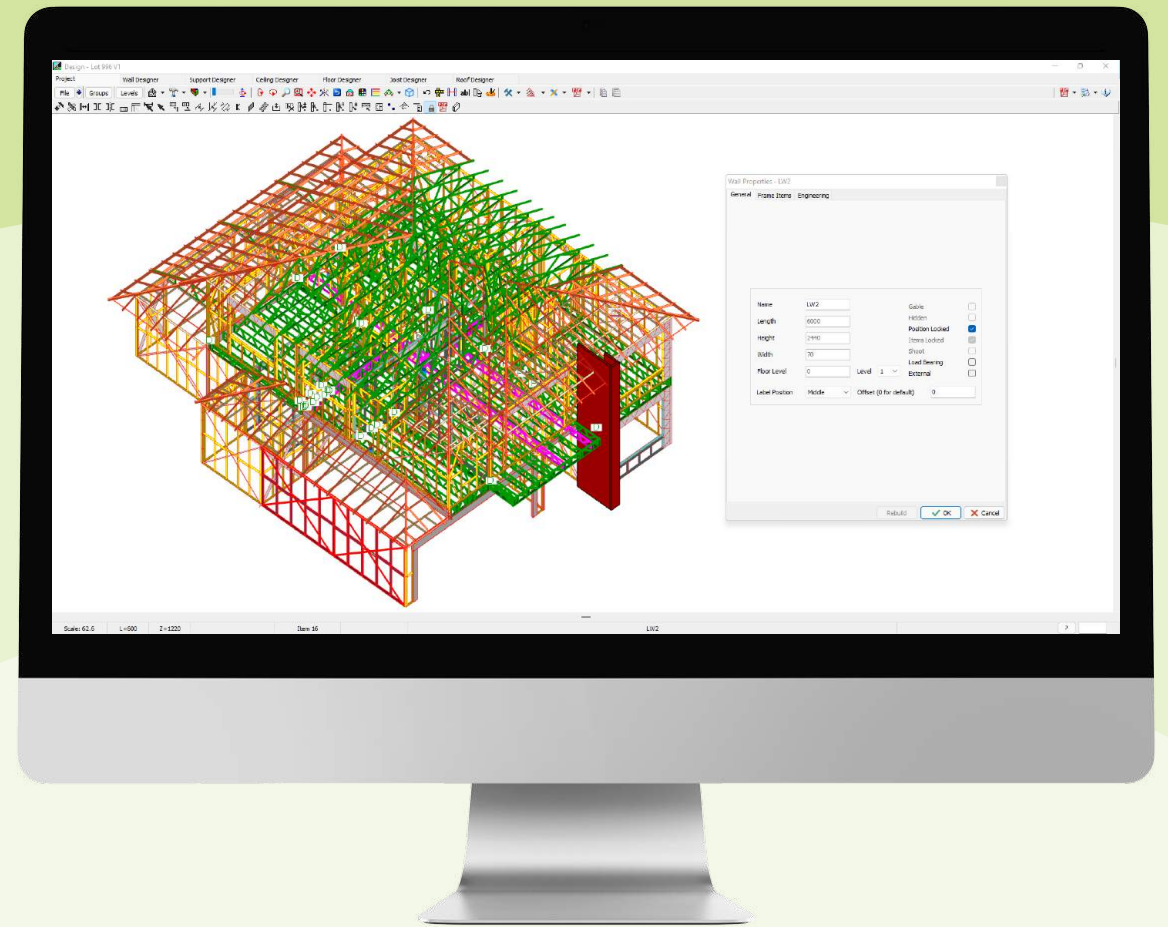


**SCOTTSDALE**  
CONSTRUCTION SYSTEMS



# Seamless, faster, smarter framing.

A single software package developed specifically for detailers, with in-built engineering intelligence. Rapidly design a house from scratch. Then perform all engineering checks using local country codes.



**A true 3D design view**  
makes it easy to see what is being designed.

## Design

Rapid, intuitive detailing

ScotSteel gives you **complete design functionality** and control, reducing the need for multiple software systems.

**All design work can be done within ScotSteel.** The automated design functions and component library makes it quick to **design virtually any element**: walls, roof, trusses, ceilings, floors and even items such as gable panels, overhand outlookers, soffitt panel and more.

If you have **existing architectural drawings**, these can be imported via DXF and rapidly interpreted into panel and truss designs.

Either way, **there's no need for 3rd party software.**

Production files are **seamlessly sent to ScotRF** rollformer software and are then ready to run on the rollforming machine.

## Engineering

Intelligence built-in

**Local engineering functionality** is built into the software, whether for single story structures with conventional trusses, or multi-level buildings with complex roofs.

The **powerful truss engineering** capability provides complete structural analysis and design of trusses. It **optimises trusses** with **economical steel usage** without compromising **local engineering requirements**.

Trusses can be engineered for all conditions: **non-cyclonic to extreme cyclonic** in excess of 290 km/h (180 mph).

**Virtually any shaped truss** can be produced including coffered ceilings, parallel cord trusses, curved trusses, dual pitched roof trusses and much more.

**Interactive analysis** converts frames into engineering geometry for linear static **Finite Element (FE) analysis** with user defined loads and boundary conditions.



**Full Design**  
toolset



**Auto**  
design



**Auto**  
layout



**Structural**  
analysis



**Design**  
checks



**Frame**  
analysis



**Component**  
library



**2D & 3D**  
design views



**Custom**  
interface



**Dynamic**  
dimensions



**Detail Print**  
functions



**BOM**  
steel usage

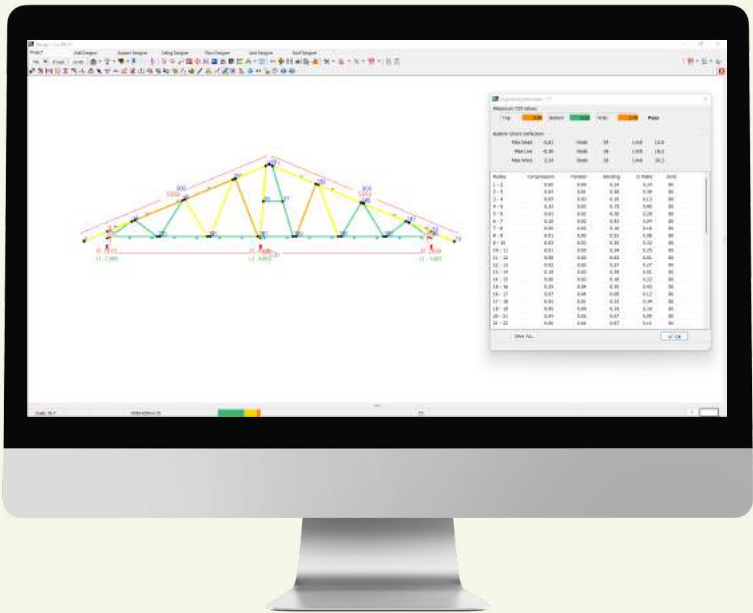




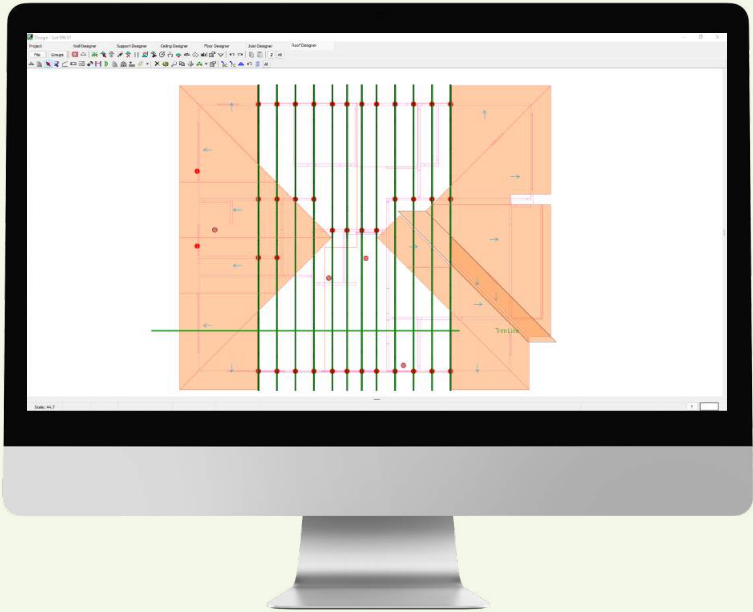


Software Features

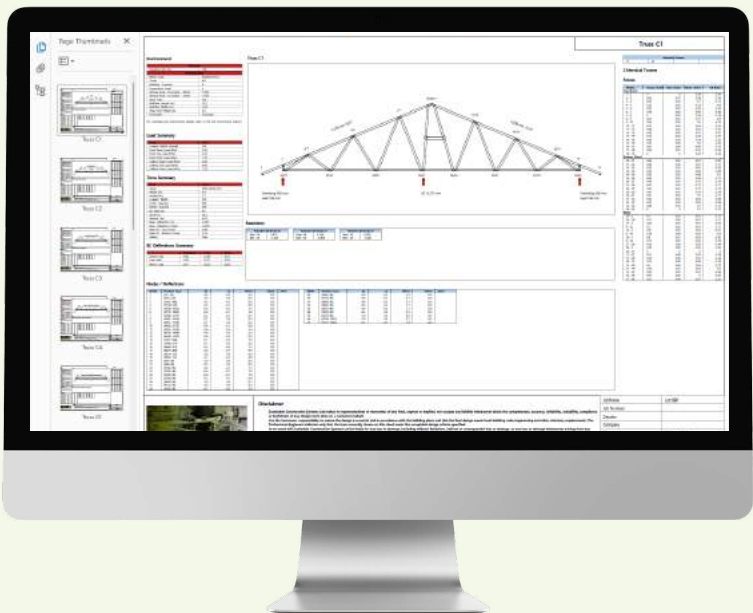
Feature	Details
General	
Operating System	64-bit Microsoft® Windows® 10 or 11
Design	
Full Design Toolset	Design any frame: roof, ceiling, wall, floor, soffit, overhangs and more. No need for architectural software.
Auto Design Functions	Automatically generate floor and ceiling joists, roof and truss components.
Auto Layout	Stud-to-truss alignment and truss layouts.
Component Library	Pre-built database of doors and windows for opening sizes
Plate Generation	For lintels, X-bracing, vertical and horizontal bracing
Views	3D Steel, 3D Panels, or a combination of both. Complete control over view from any angle
Intuitive Interface	Numerous UX features can be customised include: snap-to, dynamic zooming, lock frame position, hide/show, tool tips, graphical data entry, and more.
Engineering	
Design Checks	Quality, overlapped and unjoined check. Steel collision check.
Dynamic Dimensioning	Complete control, snap-to frame or centre line, reposition doors/windows. Metric or Imperial
Structural Analysis	Automated finite element analysis of individual trusses and panels with detailed engineering output.
Self-Certification (Truss)	(Australia Only) for Roof and Floor trusses
Pre-Production	
Steel BOM	Steel quantities calculated for all elements prior to production
Fabrication Print Outs	Print frame detail by group, including detailed materials lists
Print Anything	Send any view to print
Export Designs & Steel Usage	To 3D DXF and CSV respectively
Error Handling	
Version History	Design (SDP) files history up to 100 versions.
Diagnostic Logs	Enhanced error handling and diagnostic logging



Developed for designers  
with customisable elements,  
settings, variables and views.



Feature rich & fast  
means design times can be  
significantly reduced.



Detailed output  
via print and export for  
production ready designs.



## A single, integrated solution

Our user-friendly in-house software smooths the way, reducing the traditional multi-step fabrication process down to one integrated solution. This saves time and money for fabricators, builders and those independent contractors who supply design, detailing and engineering analysis services to the industry.



### Unlimited Licences

Don't worry about paying extra when you expand with new detailers and new computers. We provide unlimited software licences as part of your service agreement.



### Unlimited (Free) Updates

As part of your software support package, you'll receive free software updates, to ensure you continue operating with the latest innovations and software optimisation.



### Unlimited (24/7) Support

Our support is unlimited, worldwide, 24/7. No matter how often, no matter the problem — software, design or machine — we'll quickly get you back operating efficiently, with unlimited support included in the one predictable package fee.



### Training & Staffing

Our personalised software training puts your people in confident control from the start. Ongoing training is provided as needed, as well as on-demand online courses available always.

We can also connect you with detailing contractors already versed in our design and engineering software.

## The Scottsdale Ecosystem

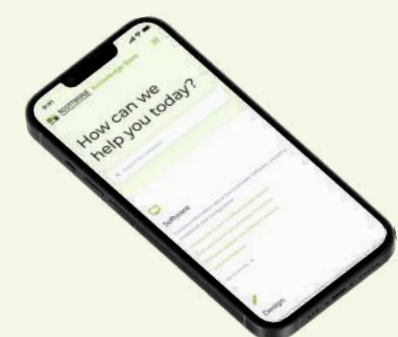
Our software forms part of our steel fabrication **ecosystem** to power growth and profitability for your steel fabrication operations.



## Modern Machines

Grunt, performance and next-level engineering, all in a compact, agile chassis for maximum productivity.

**Rollformers** | C Section and Top Hat Profiles



## Support Services

Support that starts on day 1 and never ends, including training, maintenance, parts, knowledge base, and a 24/7 support team globally.



## Framing Know-How

Leverage our 25+ years of operational experience, with best-practice setup, training, staffing and a host of tools and templates to guide your success.

# SCOTTSDALE

THE TRUSTED STEEL-FRAMING PARTNER



## CHECK OUT OUR LATEST ICC-ES CODE APPROVALS!

IBC / IRC | FBC / FRC (HVHZ) | CBC / CRC

Australia | New Zealand | Saudi Arabia | Abu Dhabi

- ✓ Global reach.
- ✓ The latest building codes.
- ✓ World's most advanced steel-framing technology.



ESR-1538



ESR-2024



ESR-2027



ESR-2093



ESR-2025



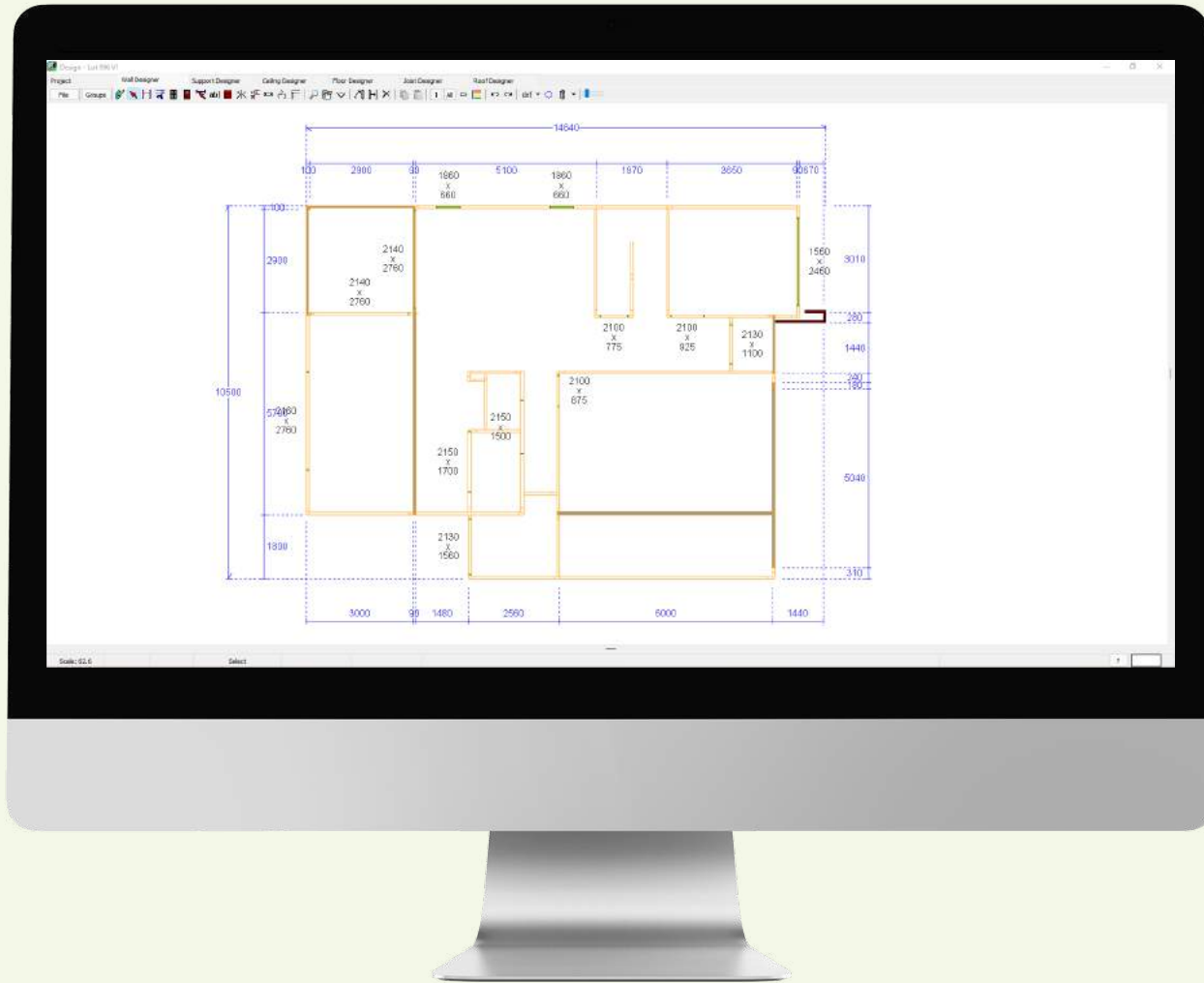
ESR-2026



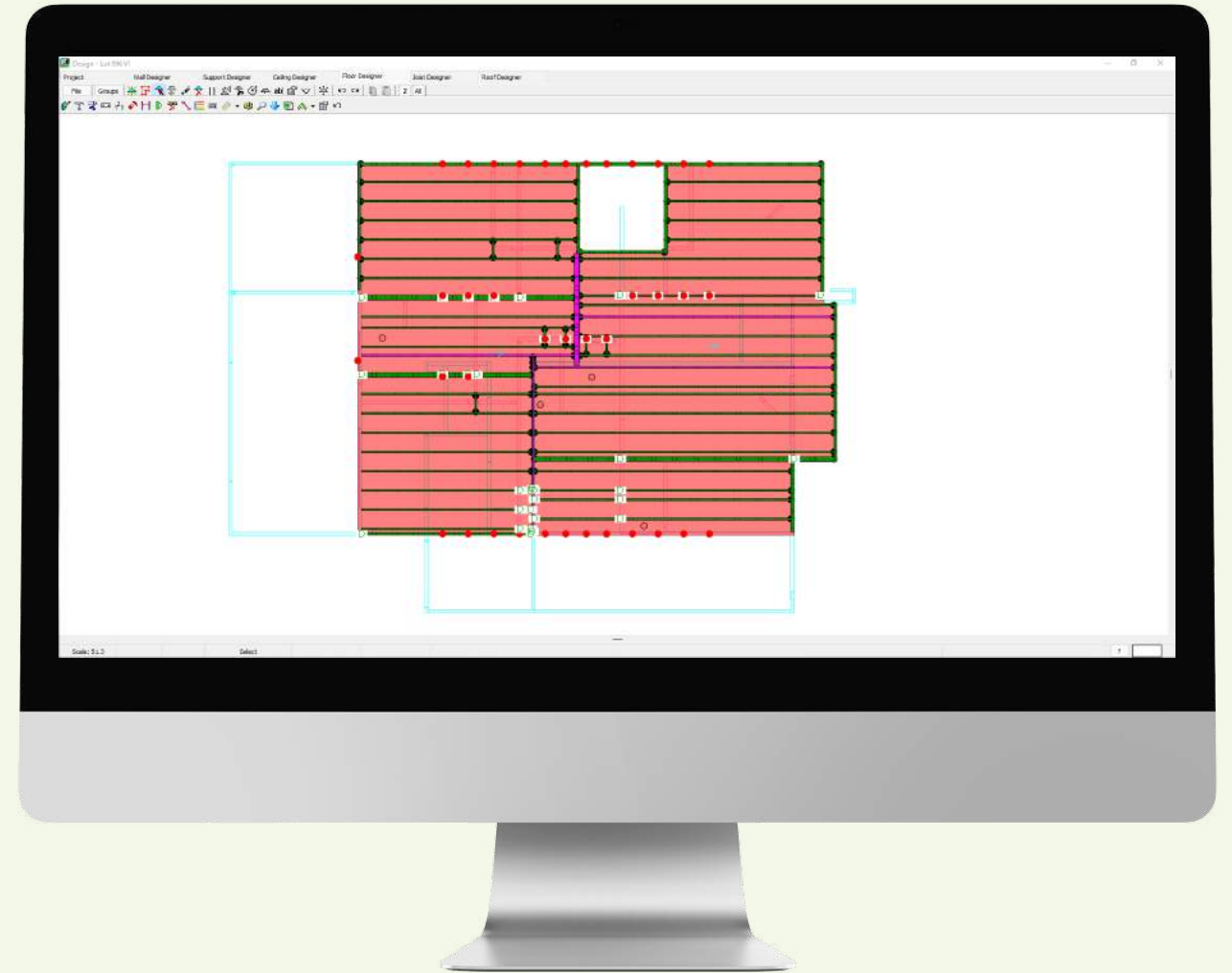
+1 (888) 406-2080

[sales@scottsdalesteelframes.com](mailto:sales@scottsdalesteelframes.com)

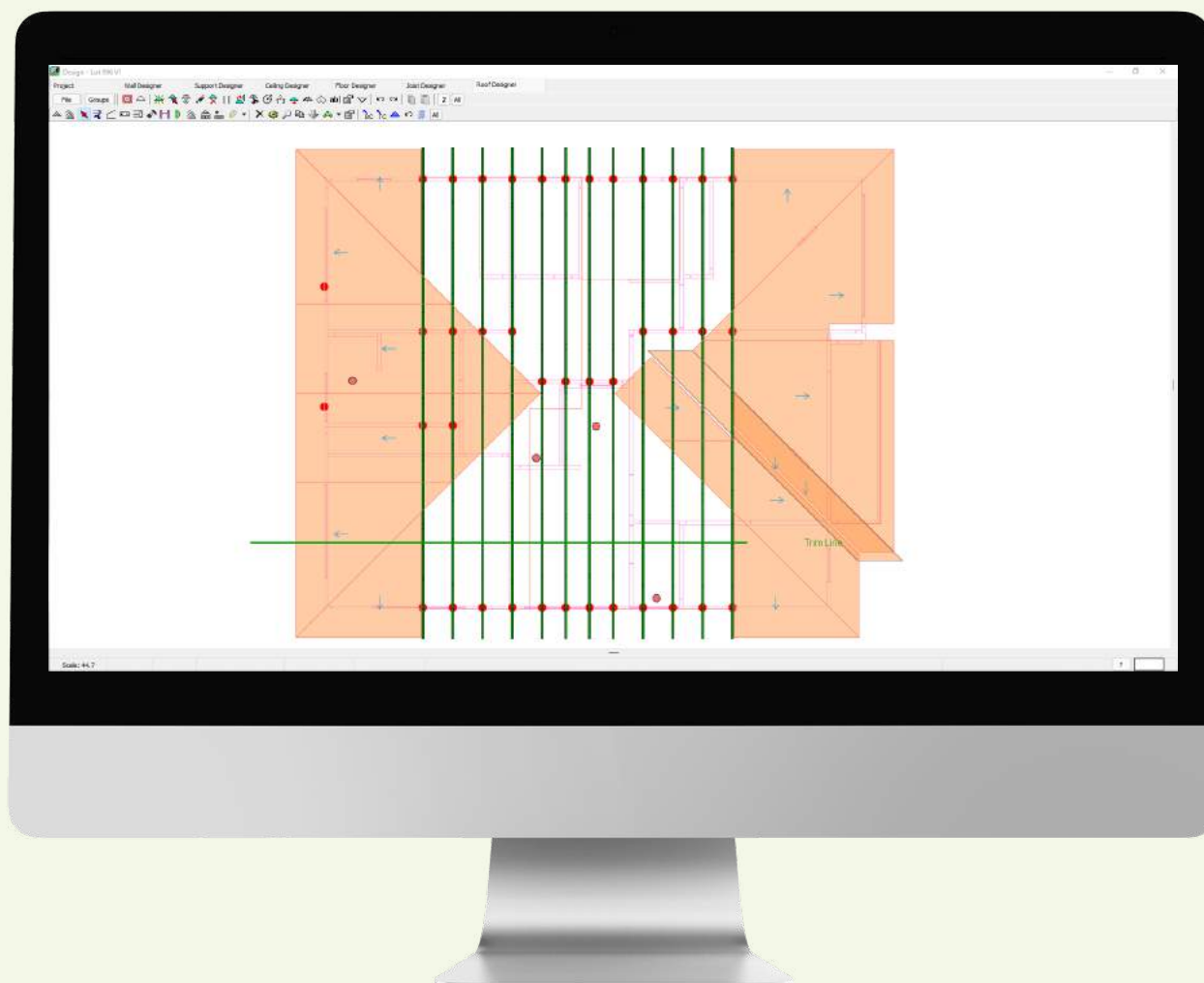




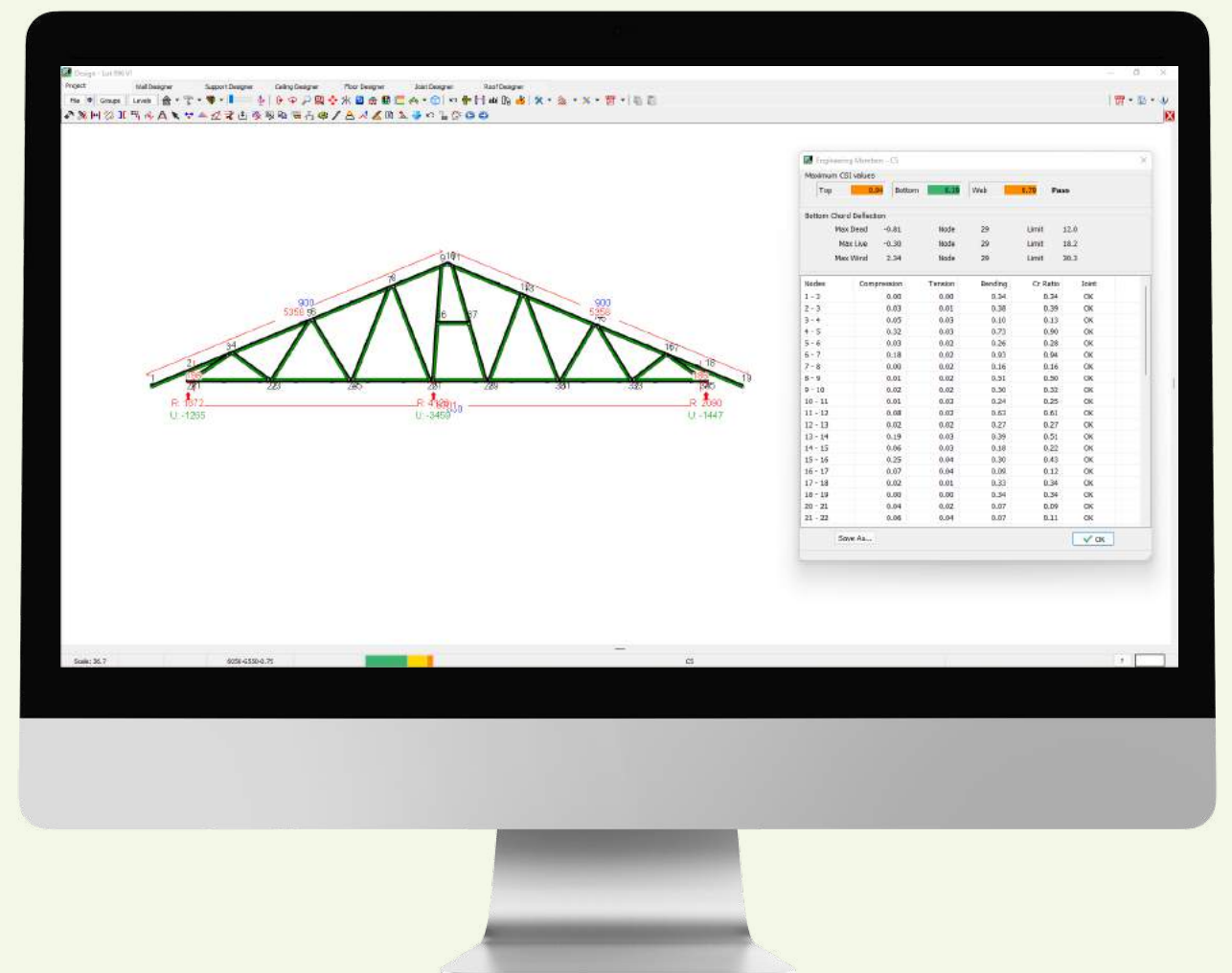
Wall Designer



Floor Designer



Roof Designer



Truss Editor

## Contact | Global Headquarters

- +61 1300 671 345
- Unit 4, 5 Henry St, Loganholme, Qld, 4129, Australia
- sales@scottsdalesteelframes.com

## More from Scottsdale

For information on the full range of machines, software and support available from Scottsdale, visit our website, [scottsdalesteelframes.com](http://scottsdalesteelframes.com).