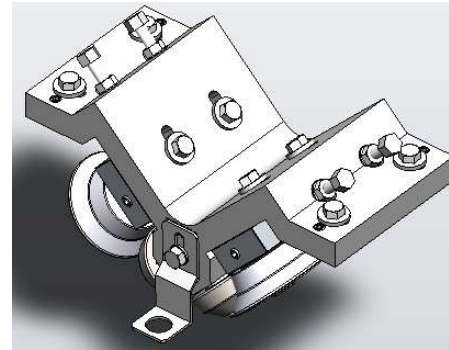


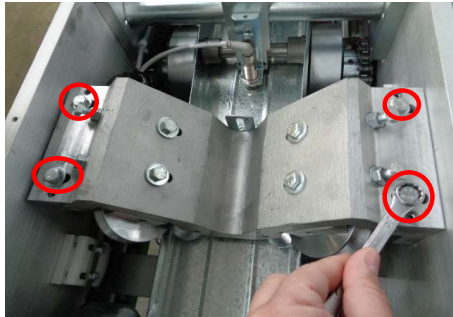
Scottsdale Reverse Lipping Unit

- ▶ Scottsdale's versatile panel Rollforming machine allows users the option to manufacture u-section profile from the cee section Rollformer. The reverse lipping unit was designed with simplicity in mind and taking existing users into mind with a simple add-on to their current panel machine. Quick changeover means the customer productivity remains at a high with minimal cost implications





Scottsdale Reverse Lipping Unit Changeover



- ▶ Remove the steel profile from the machine
- ▶ Remove the x4 M8 bolts that secure the lipping unit on the lipping brackets.
- ▶ Once the bolts are removed slide the unit outwards from the brackets and slide the new reverse lipping unit into place
- ▶ Replace the x4 M8 bolts that secure the lipping unit on the lipping brackets. Leave the bolts hand tight
- ▶ Load the steel back through the Rollformer, this will allow the unit to self align once the steel have past through the unit
- ▶ Tighten the bolt keeping the unit secured in place